

FFIPL: Jan / 2021



FRANKE FABER INDIA PRIVATE LIMITED

Regd. Office/ Factory: 1086/1/2, Sanaswadi, Nagar Road, Tal Shirur, Pune 412208, Maharashtra, India
Toll Free Helpline: 1800 209 3484, email: ks-customercare.in@franke.com, website: www.faberindia.com



Franke Faber India Private Limited is Licensed User of ©Trademark of FABER S.P.A

Features and specifications are subject to change without prior notice. Pictorial representation may not be identical to actual product.

FABER

AIR MATTERS



PRODUCT RANGE CATALOGUE 2021

A VISION OF GLOBAL REACH.

A VISION OF GLOBAL REACH.

FABER has a lot in common with air ... both are present all over the world.

Air has always been our chosen material. Now the world is our home. So it's only natural we should want to improve them both. Installing a kitchen hood is an easy way to improve the air in your home, of course, but only thanks to Faber. After all, we invented the kitchen hood, and we are making them better every day to provide our customers with the ultimate performance, quality and comfort.

Aspiring to a better world through leadership. Everywhere, every day.

INVESTING IN THE WORLD

Always growing, to serve more people.

THINKING LONG TERM

All-round competence: automation, robotics, IT, total quality.

INNOVATING CONTINUOUSLY

Engineering research, advanced solutions, living benefits.

DESIGNING THE FUTURE

Ergonomics, design, functionality, comfort, style and wellbeing for the home.



HEADQUARTER

Fabriano (AN) -ITALIA

COMMERCIAL OFFICE

Hudson -U.S.A.

Chambly -FRANCIA

Istanbul -TURCHIA

Mosca -RUSSIA

Pune -INDIA

PRODUCTION PLANT

Sassoferrato -ITALIA

Manisa -TURCHIA

Villedieu-les-Poeles -FRANCIA Byske -SVEZIA

Kaluga -RUSSIA

Pune -INDIA

San Luis -ARGENTINA

San Luis Potosi -MESSICO



FRANKE FABER INDIA PRIVATE LIMITED.

India's No. 1 Kitchen Appliances Company.

With Swiss (FRANKE) and Italian (FABER) parentage, FRANKE FABER India Pvt. Limited is a part of the 2.5 billion USD FRANKE Artemis Group. Completing 25 years with its India headquarters in Pune, Maharashtra. It is now India's number 1 Kitchen Appliances Company. A host of Kitchen Essentials such as Hoods/Chimney, Built-in Hobs, Hob-Cooktop Hybrids, Cooktops, Built-in ovens, Built-in MWOs, Cooking Ranges, Dishwashers, Induction Cooktops, Water Purifiers, Water Geysers and other small appliances are brought to you by the group, and FRANKE FABER India Private Limited is on its way to reinvent the luxury kitchen space in the country.

SKYLIFT

Description: Sky Lift
Finish: White Glass
Controls: Electronics Control
Lighting: 4 LED Lights
Filter: Cassettes
Suction: 1000 m3/hr
Width (mm): 900



NEST PLUS

Description: NEST Plus
Finish: Stainless Steel/ Glass
Controls: Electronics New Remote
Lighting: Spotlight 4x20 W
Filter: Cassettes
Suction: 1000 m3/hr
Width (mm): 860



PAREO PLUS

Description: PAREO Plus
Finish: Tibetan Silver
Controls: Electronics New Remote
Lighting: 4 LED Lights
Filter: Cassettes
Suction: 1000 m3/hr
Width (mm): 500



BIOS

Description: BIOS EG6 RD/XS F32
Finish: Ruby Red
Controls: Electronic Backlight
Lighting: 2 Led LV 3000K
Filter: Stainless steel
Suction: 1000 m3/hr
Width (mm): 320



TALIKA DGM

Description: TALIKA DGM A80
Finish: Dark Grey Matt
Controls: Squar Touch
Lighting: 2 Led LV 3000K
Filter: Cassettes
Suction: 1000 m3/hr
Width (mm): 800



TALIKA OC

Description: TALIKA OC A80
Finish: Old Copper
Controls: Squar Touch
Lighting: 2 Led LV 3000K
Filter: Cassettes
Suction: 1000 m3/hr
Width (mm): 800



JOLIE

Description: JOLIE
Finish: Silver
Controls: Electronic Backlight
Lighting: 2 LED lights
Filter: Cassettes
Suction: 1000 m3/hr
Width (mm): 800



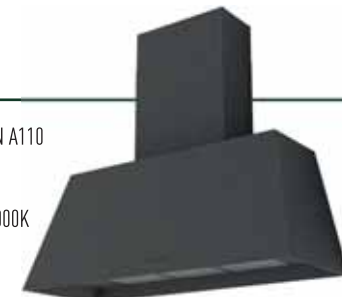
JOLIE

Description: JOLIE
Finish: Copper
Controls: Electronic Backlight
Lighting: 2 LED lights
Filter: Cassettes
Suction: 1000 m3/hr
Width (mm): 800



CHLOE XL CI A110

Description: CHLOE XL CAST IRON A110
Finish: Cast Iron
Controls: Push Button
Lighting: 1 Led Bar V Blade 4000K
Filter: Cassettes
Suction: 1000 m3/hr
Width (mm): 1100



CHLOE

Description: CHLOE' EVO+ OC A70
Finish: Old Copper
Controls: Push Button
Lighting: 1 Led LV 4000K
Filter: Cassettes
Suction: 1000 m3/hr
Width (mm): 700



VEIL

Description: VEIL
Finish: Tibetan Silver
Controls: Electronics New Remote
Lighting: 2 LED Lights
Filter: Cassettes
Suction: 1000 m3/hr
Width (mm): 900



INKLINE

Description: INKLINE Eg8 X/V A90
Finish: SS and Glass
Controls: Soft Touch with Backlight
Lighting: 2 x 20 W Spotlight lamp
Filter: Stainless steel
Suction: 1000 m3/hr
Width (mm): 900



STILO ISOLA 120

Description: Stilo Isola LTW 120
Finish: Stainless Steel
Controls: Electronic
Lighting: 4 x 1.1W Spot Lamp
Filter: 3 Layer Baffle
Suction: 1000 m3/hr
Width (mm): 1200



JANUS ISOLA 90

Description: JANUS ISOLA BK LTW 90
Finish: Black+ Front Glass + Rear Glass
Controls: Dual Touch control (Front + Rear)
Lighting: 4 x 1.1W LED Spot lamp
Filter: 3 Layer Baffle
Suction: 1000 m3/hr
Width (mm): 900



STILO SLIM PLUS DD ISOLA

Description: Stilo Slim Plus DD Isola LTW 90
Finish: Stainless Steel
Controls: Electronic
Lighting: 4 x 20 W LED lamp
Filter: 3 Layer Baffle
Suction: 1000 m3/hr
Width (mm): 900



STILUX ISOLA 90

Description: Stilux Isola Plus LTW 90
Finish: Stainless Steel
Controls: Touch
Lighting: 4 x 1.1W Spot Lamp
Filter: 3 Layer Baffle
Suction: 1000 m3/hr
Width (mm): 900



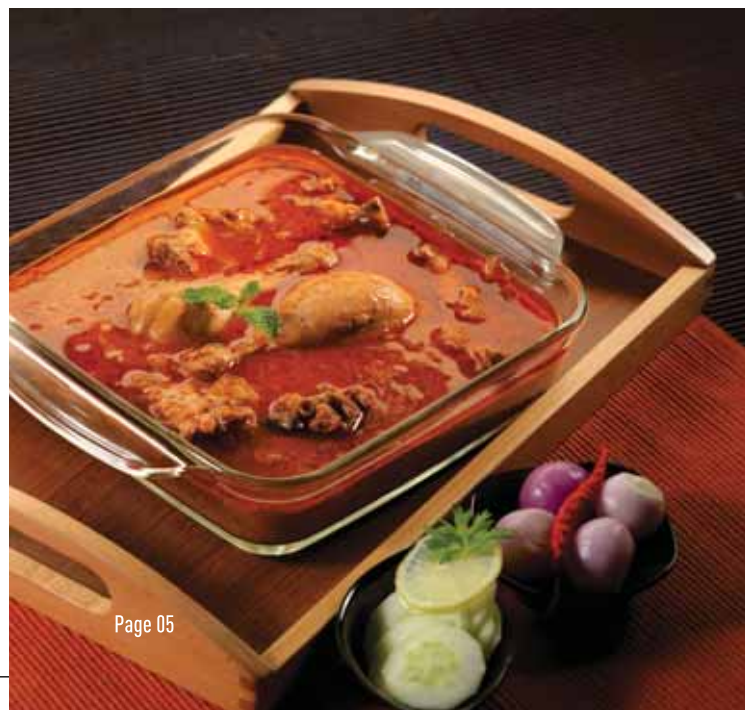
ARCO ISOLA 90

Description: Arco Isola LTW 90
Finish: Stainless Steel
Controls: Electronic
Lighting: 4 x 1.1W Spot Lamp
Filter: 3 Layer Baffle
Suction: 1200 m3/hr
Width (mm): 900



GLASSY ISOLA

Description: Glassy Isola Plus LTW 60/90
Finish: Stainless Steel
Controls: Electronic
Lighting: 4 x 2W LED Filament lamp
Filter: 3 Layer Baffle
Suction: 1200 m3/hr
Width (mm): 600/900



GLAMOUR PRO 3D BK FT 60/90

HOOD
Description: 3N1 Aerostation Glamour Pro 3D BK FT 60/90
Finish: Black
Speed: 3+ Intensive
Controls: Feather Touch With Backlit
Lighting: 2x1.5W LED lamp
Filter: 3 Layer Baffle
Suction: 1095 m3/hr
Width: 600/900 (mm)



FAN: Controls: Premium Backlit Soft Touch panel, Motor: 3 Speed
PURIFIER: Nylon Filter: Remove particles such as dust and dirt from the air.
Carbon Filter: Traps Odour, Gases and Neutralise them. HEPA 1.0 PM Filter: Removes Dust, Smoke particles up to size of 1 Micron.

STAR PRO 3D TC AB 60

HOOD
Description: 3N1 Aerostation Star Pro 3D TC AB 60/90
Finish: Alligator Black
Speed: 3+ Intensive
Controls: Touch With Backlit
Lighting: 2x1.5W LED lamp
Filter: 3 Layer Baffle
Suction: 1095 m3/hr
Width: 600 mm



FAN: Controls: Premium Backlit Soft Touch panel, Motor: 3 Speed
PURIFIER: Nylon Filter: Remove particles such as dust and dirt from the air.
Carbon Filter: Traps Odour, Gases and Neutralise them. HEPA 1.0 PM Filter: Removes Dust, Smoke particles up to size of 1 Micron.

STAR PRO 3D TC AB 90

HOOD
Description: 3N1 Aerostation Star Pro 3D TC AB 60/90
Finish: Alligator Black
Speed: 3+ Intensive
Controls: Touch With Backlit
Lighting: 2x1.5W LED lamp
Filter: 3 Layer Baffle
Suction: 1095 m3/hr
Width: 900 (mm)



FAN: Controls: Premium Backlit Soft Touch panel, Motor: 3 Speed
PURIFIER: Nylon Filter: Remove particles such as dust and dirt from the air.
Carbon Filter: Traps Odour, Gases and Neutralise them. HEPA 1.0 PM Filter: Removes Dust, Smoke particles up to size of 1 Micron.

SPARKLE PRO 3D TC AB FT 90

HOOD
Description: 3N1 Aerostation Sparkle Pro 3D AB FT 90
Finish: Alligator Black
Speed: 3+ Intensive
Controls: Touch With Backlit
Lighting: 2x1.5W LED lamp
Filter: 3 Layer Baffle
Suction: 1095 m3/hr
Width: 900 (mm)



FAN: Controls: Premium Backlit Soft Touch panel, Motor: 3 Speed
PURIFIER: Nylon Filter: Remove particles such as dust and dirt from the air.
Carbon Filter: Traps Odour, Gases and Neutralise them. HEPA 1.0 PM Filter: Removes Dust, Smoke particles up to size of 1 Micron.



GLAMOUR 3D FT AB/AS LTW 60/90

HOOD

Description: Glamour 3D FT AB/AS LTW 60/90
Finish: Alligator Black/Antique Silver
Speed: 3+ Intensive
Controls: Soft Touch with Blue Backlit
Lighting: 2 x 1.5W LED lamp
Filter: 3 Layer Baffle
Suction: 1095 m3/hr
Width: 600/900 (mm)

FAN: Controls: Premium Backlit Soft Touch panel , Motor: 3 Speed
PURIFIER: Nylon Filter: Remove particles such as dust and dirt from the air.
Carbon Filter: Traps Odour, Gases and Neutralise them. HEPA 1.0 PM Filter: Removes Dust, Smoke particles upto size of 1 Micron.



SPARKLE 3D TC AB/ AS LTW 90

HOOD

Description: Sparkle 3D TC AB/AS LTW 90
Finish: Alligator Black/Antique Silver
Speed: 3+ Intensive
Controls: Soft Touch with Blue Backlit
Lighting: 2 x 1.5W LED lamp
Filter: 3 Layer Baffle
Suction: 1095 m3/hr
Width: 900 (mm)

FAN: Controls: Premium Backlit Soft Touch panel , Motor: 3 Speed
PURIFIER: Nylon Filter: Remove particles such as dust and dirt from the air.
Carbon Filter: Traps Odour, Gases and Neutralise them. HEPA 1.0 PM Filter: Removes Dust, Smoke particles upto size of 1 Micron.



GLAMOUR FT AB/AS/AC LTW 60/90

HOOD

Description: Glamour FT AB/AS/ AC LTW 60/90
Finish: Alligator Black/Antique Silver/ Antique Copper
Speed: 3+ Intensive
Controls: Soft Touch with Blue Backlit
Lighting: 2 x 1.5W LED lamp
Filter: 3 Layer Baffle
Suction: 1000 m3/hr
Width: 600/900 (mm)

FAN: Controls: Premium Backlit Soft Touch panel , Motor: 3 Speed
PURIFIER: Nylon Filter: Remove particles such as dust and dirt from the air.
Carbon Filter: Traps Odour, Gases and Neutralise them. HEPA 1.0 PM Filter: Removes Dust, Smoke particles upto size of 1 Micron.



SPARKLE TC AB/AS/AC LTW 90

HOOD

Description: Sparkle TC AB/AS/AC LTW 90
Finish: Alligator Black/Antique Silver/Antique Copper
Speed: 3+ Intensive
Controls: Soft Touch with Blue Backlit
Lighting: 2 x 1.5W LED lamp
Filter: 3 Layer Baffle
Suction: 1000 m3/hr
Width: 900 (mm)

FAN: Controls: Premium Backlit Soft Touch panel , Motor: 3 Speed
PURIFIER: Nylon Filter: Remove particles such as dust and dirt from the air.
Carbon Filter: Traps Odour, Gases and Neutralise them. HEPA 1.0 PM Filter: Removes Dust, Smoke particles upto size of 1 Micron.



STILUX 3D

Description: Stilux 3D Plus T2S2 TC Sen Max LTW 90/60
Stilux 3D T2S2 BK TC LTW 90/60
Stilux 3D T2S2 TC LTW 90/60

Finish: Stainless Steel/ Black / Black Mirror
Controls: Touch
Lighting: 2x1.1W LED lamp
Filter: 3 Layer Baffle
Suction: 3D Plus Max: 1350 m3/hr,
3D: 1095 m3/hr, 3D Plus: 1150 m3/hr.
Width : 900/600 (mm)



STILO 3D

Description: Stilo 3D Plus T2S2 Max LTW 90
Stilo Slim 3D Plus T2S2 BK LTW 90/60
Stilo Slim 3D Plus T2S2 LTW 90/60

Finish: Stainless Steel/ Black
Controls: Push Buttons
Lighting: 2x1.1W LED lamp
Filter: 3 Layer Baffle
Suction: 3D Plus Max: 1350 m3/hr,
3D: 1095 m3/hr, 3D Plus: 1150 m3/hr.
Width: 900/600 (mm)



FEEL 3D

Description: Feel 3D Plus T2S2 TC Sen Max LTW 90/60
Feel 3D T2S2 Bk TC LTW 60/90
Feel 3D T2S2 Bk PB LTW 60/90
Feel 3D T2S2 PB LTW 60/90

Finish: Black with Curve Glass
Controls: Touch / Push Button Control
Lighting: 2x1.1W LED lamp
Filter: 3 Layer Baffle
Suction: 3D Plus Max: 1350 m3/hr,
3D: 1095 m3/hr
Width: 900/600 (mm)



ARCO 3D

Description: Arco 3D T2S2 Max LTW 60/90
Arco 3D Plus T2S2 Bk LTW 60/90
Arco 3D Plus T2S2 LTW 60/90

Finish: Black with Bend Glass
Controls: Push Buttons
Lighting: 2x1.1W LED lamp
Filter: 3 Layer Baffle
Suction: 3D Plus Max: 1350 m3/hr,
3D: 1095 m3/hr, 3D Plus: 1150 m3/hr.
Width: 900/600 (mm)



SUPER 3D

Description: Super 3D Plus MAX T2S2 BK TC 60
Super 3D Plus T2S2 Bk TC LTW 90/60
Finish: Black with Flat Glass
Controls: Touch
Lighting: 2x1.1W LED lamp
Filter: 3 Layer Baffle
Suction: 3D Plus Max: 1350 m3/hr,
3D Plus: 1150 m3/hr
Width : 900/600 (mm)



COCKTAIL 3D

Description: Cocktail 3D T2S2 BK TC LTW 90/60
Finish: Black Mirror
Controls: Touch
Lighting: 2x1.1W LED lamp
Filter: Cassette
Suction: 1095 m3/hr
Width: 900/600 (mm)



TOPAZ 3D

Description: Topaz Smart 3D T2S2 Bk TC LTW 60/90
Topaz 3D T2S2 BK TC LTW 60/90
Topaz 3D T2S2 BK PB LTW 60/90
Finish: Black Conical with Front Mirror
Controls: Touch / Push Button Control
Lighting: 2x1.1W LED lamp
Filter: 3 Layer Baffle
Suction: 1095 m3/hr
Width : 900/600 (mm)



*Smart: Smoke & Smell Sensor Technology

TENDER 3D

Description: Tender 3D T2S2 Max LTW 60/90/ BK 60/90
Tender 3D T2S2 LTW 60/90
Tender 3D T2S2 BK LTW 60/90
Finish: Stainless Steel Conical
Controls: Push Buttons
Lighting: 2x5W CFL lamp
Filter: 3 Layer Baffle
Suction: 3D Max: 1295 m3/hr,
3D: 1095 m3/hr, 3D Plus: 1150 m3/hr.
Width : 600/900 (mm)



TRATTO 3D

Description: Tratto 3D T2S2 LTW 60
Finish: Black with Black Mirror
Controls: Push Button Control
Lighting: 2x1.1W LED lamp
Filter: 3 Layer Baffle
Suction: 1095 m3/hr
Width : 900/600 (mm)



GLASSY 3D

Description: Glassy 3D T2S2 Max LTW 90/60
Glassy 3D T2S2 LTW 90/75/60
Glassy 3D T2S2 BK LTW 90/60
Finish: Stainless Steel / Black Glass
Controls: Push Button Control
Lighting: 2x1.1W LED lamp
Filter: 3 Layer Baffle
Suction: 3D Plus Max: 1350 m3/hr, 3D: 1095 m3/hr, 3D Plus: 1150 m3/hr.
Width : 900/750/600 (mm)



FABIO

Description: Fabio BK/ WH 60/90
Finish: Black / White Mirror
Controls: Touch
Lighting: 2x1.1W LED lamp
Filter: Cassette
Suction: 1150 m3/hr
Width (mm): 600/900



VERTICO

Description: Vertico WH/BK 60
Finish: Black / White Mirror
Controls: Touch
Lighting: 2x1.1W LED lamp
Filter: Cassette
Suction: 1150 m3/hr
Width (mm): 600



CURVY PLUS

Description: Curvy Plus TC BK 60/90
Finish: Black with Black Mirror
Controls: Touch
Lighting: 2x1.1W LED lamp
Filter: Cassette
Suction: 1000 m3/hr
Width (mm): 600/900



MIRROR PLUS

Description: Mirror Plus WH/ BK TC 60/90
Finish: Black / White Mirror
Controls: Touch
Lighting: 2x1.1W LED lamp
Filter: Cassette
Suction: 1000 m3/hr
Width (mm): 600/900



SLIM PLUS

Description: Slim Plus DD LTW 90
Finish: Stainless Steel
Controls: Soft Touch
Lighting: 2x1.1W LED lamp
Filter: Baffle
Suction: 1000 m3/hr
Width (mm): 900



CLASSICO

Description: Classico TS SS TC 90
Finish: Stainless Steel with Black Mirror
Controls: Touch
Lighting: 2x1.1W LED lamp
Filter: Baffle
Suction: 1150 m3/hr
Width (mm): 900



TRATTO PLUS

Description: Tratto Plus TC BK LTW 60
Tratto Plus PB BK LTW 60
Finish: Black Powder Coated
Controls: Touch / Push Buttons
Lighting: 2x1.1W LED lamp
Filter: Baffle
Suction: 1000 m3/hr
Width (mm): 600



MARTINI

Description: Martini TC BK LTW 60
Finish: Black Mirror
Controls: Touch
Lighting: 2x1.1W LED lamp
Filter: Baffle
Suction: 1150 m3/hr
Width (mm): 900



PEPPY

Description: Peppy BK 45/60
Finish: Black Powder Coated
Controls: Rotary Knob
Lighting: 2x1.1W LED lamp
Filter: Cassette
Suction: 1000 m3/hr
Width (mm): 450/600



TENDER

Description: Tender 800 LTW 60
Finish: Stainless Steel
Controls: Push Button
Lighting: 2x2W LED Filament lamp
Filter: Baffle
Suction: 800 m3/hr
Width (mm): 600



TOPAZ

Description: Topaz Plus LTW 60/90
Finish: Stainless Steel
Controls: Push Button
Lighting: 2x2W LED Filament lamp
Filter: Baffle
Suction: 1000 m3/hr
Width (mm): 600/900



GLASSY

Description: Glassy 800 LTW 60 (E)
Finish: Stainless Steel and Glass
Controls: Push Button
Lighting: 2x1.1W LED lamp
Filter: Baffle
Suction: 800 m3/hr
Width (mm): 600



PRETTY PLUS

Description: Pretty Plus BK LTW 60
Finish: Black Powder Coated
Controls: Push Button
Lighting: 2x1.1W LED lamp
Filter: Baffle
Suction: 1000 m3/hr
Width (mm): 600



CONICO

Description: Conico SS 60/ SS BF 60
Finish: Stainless Steel
Controls: Push Button
Lighting: 2x2W LED Filament lamp
Filter: Baffle / Cassette
Suction: 800 m3/hr
Width (mm): 600



CONICO BK 60

Description: Conico BK BK 60
Finish: Black Powder Coated
Controls: Push Button
Lighting: 2x2W LED Filament lamp
Filter: Baffle / Cassette
Suction: 800 m3/hr
Width (mm): 600



RAY

Description: RAY PLUS BK LTW 60
Finish: Black Powder Coated
Controls: Push Buttons
Lighting: 2x1.1W LED lamp
Filter: Baffle
Suction: 1000 m3/hr
Width (mm): 600



CLEO

Description: Cleo 700 PB BK LTW 60
Cleo 700 PB SS LTW 60
Finish: Stainless Steel
Controls: Push Button
Lighting: 2x5W CFL lamp
Filter: Baffle
Suction: 800 m3/hr
Width (mm): 600



RUBY XL TC

Description: Ruby XL TC BK 60
Finish: Black
Controls: Touch
Lighting: LED Lamp 1x2 W
Filter: Baffle
Suction: 700 m3/hr
Width (mm): 600



RUBY XL TC

Description: Ruby XL TC SS 60
Finish: Stainless Steel
Controls: Touch
Lighting: LED Lamp 1x2 W
Filter: Baffle
Suction: 700 m3/hr
Width (mm): 600



RUBY XL PB

Description: Ruby XL PB SS 60
Finish: Stainless Steel
Controls: Push Button
Lighting: LED Lamp 1x2 W
Filter: Baffle
Suction: 700 m3/hr
Width (mm): 600



VERTEX PLUS 90

Description: Vertex Plus FL TC HC BK 90
 Finish: Black Tempered Glass
 Function: Heat Autoclean
 Controls: 3 Speed Gesture
 Lighting: 2x1.5W LED lamp
 Filter: Filterless
 Suction: 1500 m3/hr
 Width (mm): 900
 Blower: Metal Blower
 Oil Collector: Stainless Steel



VERTEX PLUS 60

Description: Vertex Plus FL TC HC BK 60
 Finish: Black Tempered Glass
 Function: Heat Autoclean
 Controls: 3 Speed Gesture
 Lighting: 2x1.5W LED lamp
 Filter: Filterless
 Suction: 1200 m3/hr
 Width (mm): 600
 Blower: Metal Blower
 Oil Collector: Stainless Steel



APEX

Description: Apex FLHC SC BK 60/90
 Finish: Black Tempered Glass
 Function: Heat Autoclean
 Controls: 3 Speed Gesture
 Lighting: 2x1.5W LED lamp
 Filter: Filterless
 Suction: 1500 m3/hr
 Width (mm): 600/900
 Blower: Metal Blower
 Oil Collector: Stainless Steel



ZENITH

Description: Zenith FL SC AC BK 60/90
 Finish: Black Tempered Glass
 Controls: 3 Speed Gesture
 Lighting: 2x1.5W LED lamp
 Filter: Filterless
 Suction: 1350 m3/hr
 Width (mm): 600/900
 Blower: Metal Blower
 Oil Collector: Stainless Steel



MERCURY

Description: Mercury HC TC BK 60/90
 Finish: Black Tempered Glass
 Function: Heat Autoclean
 Controls: 3 Speed Gesture
 Lighting: 2x1.5W LED lamp
 Filter: 1 Pc Baffle Filter
 Suction: 1200 m3/hr
 Width (mm): 600/900
 Blower: Metal Blower
 Oil Collector: Stainless Steel



INTRODUCING THE NEXT GENERATION OF AUTOCLEAN CHIMNEYS WITH 360 DEGREE STEAM DRIVE TECHNOLOGY



Faber presents the all new, all-powerful **Bolt Chimney** with never seen before **Steam Drive 360 Degree technology** that cleans the oil and other residues with just one touch.

Get ready for more performance with less maintenance.

EXPERIENCE ABSOLUTE POWER OF STEAM CLEANING

OTHER FEATURES

Filterless Technology
No cleaning hassles and zero cost maintenance.

Powerful Motor
Enables higher suction power, ensuring high performance and efficiency.

BOLT (Steam Clean Technology)

Description: BOLT FL SW SC BK 90
 Finish: Black Tempered Glass
 Function: Steam Clean
 Controls: Gesture & Touch 2 Speed +1 Turbo
 Lighting: 2x1.5W LED lamp
 Filter: Filterless
 Suction: 1500 m3/hr
 Width (mm): 900
 Blower: Metal Blower
 Oil Collector: Stainless Steel



ORIENT XPRESS BK

Description: ORIENT XPRESS HC SC BK 60/90
 Finish: Black Glass + Black Powder Coated
 Function: Heat Autoclean
 Controls: 3 Speed Gesture
 Lighting: 2x1.5W LED lamp
 Filter: Filterless
 Suction: 1200 m3/hr
 Width (mm): 600/900
 Blower: Metal Blower with Metal Housing
 Oil Collector: Stainless Steel



ORIENT XPRESS SS

Description: Orient Xpress HC SC SS 60/90
 Finish: Black Tempered Glass with SS
 Function: Heat Autoclean
 Controls: 3 Speed Gesture
 Lighting: 2x1.5W LED lamp
 Filter: Filterless
 Suction: 1200 m3/hr
 Width (mm): 600/900
 Blower: Metal Blower with Metal Housing
 Oil Collector: Stainless Steel



ACE PRO

Description: Ace Pro HC PB BK 60/90
 Finish: Black Glass + Black Powder Coated
 Function: Heat Autoclean
 Controls: Push Button
 Lighting: 2x1.5W LED lamp
 Filter: Filterless
 Suction: 1100 m3/hr
 Width (mm): 600/900
 Blower: Metal Blower with Metal Housing
 Oil Collector: Stainless Steel



SUNNY HC

Description: Sunny HC SC BK 60/90
 Finish: Black Glass + Black Powder Coated
 Function: Heat Autoclean
 Controls: 3 Speed Gesture
 Lighting: 2x1.5W LED lamp
 Filter: Filterless
 Suction: 1200 m3/hr
 Width (mm): 600/900
 Blower: Metal Blower with Metal Housing
 Oil Collector: Stainless Steel



CREST PLUS

Description: Crest Plus HC SC BK 60/90
 Finish: Black Tempered Glass with SS
 Function: Heat Autoclean
 Controls: 3 Speed Gesture
 Lighting: 2x1.5W LED lamp
 Filter: Filterless
 Suction: 1200 m3/hr
 Width (mm): 600/900
 Blower: Metal Blower
 Oil Collector: Stainless Steel



EVEREST

Description: Everest SC TC HC BK 60/90
 Finish: Black Glass + Black Powder Coated
 Function: Heat Autoclean
 Controls: 3 Speed Gesture
 Lighting: 2x1.5W LED lamp
 Filter: Filterless
 Suction: 1200 m3/hr
 Width (mm): 600/900
 Blower: Metal Blower
 Oil Collector: Stainless Steel



OPEL

Description: Opel FLHC SC BK 60
 Finish: Black Tempered Glass with SS
 Function: Heat Autoclean
 Controls: 3 Speed Gesture
 Lighting: 2x1.5W LED lamp
 Filter: Filterless
 Suction: 1350 m3/hr
 Width (mm): 600
 Blower: Metal Blower
 Oil Collector: Stainless Steel



LAUREL

Description: Laurel FL SC 60/90
 Finish: Black Tempered Glass with SS
 Function: Heat Autoclean
 Controls: 3 Speed Gesture
 Lighting: 2x1.5W LED lamp
 Filter: Filterless
 Suction: 1350 m3/hr
 Width (mm): 600/900
 Blower: Metal Blower
 Oil Collector: Stainless Steel



PRIMUS PLUS-N

Description: Primus Plus Energy TC SC HC BK-N 60/90
 Finish: Black Tempered Glass & S/S 430
 Function: Electro Thermal Autoclean
 Controls: 3 Speed Gesture
 Lighting: 2x1.5W LED lamp
 Filter: Baffle Filter
 Suction: 1500 m3/hr
 Width (mm): 600/900
 Blower: Metal Blower
 Oil Collector: Stainless Steel



PRIMUS PLUS

Description: Primus Plus Energy TC HC BK 60/90
 Finish: Black Tempered Glass & S/S 430
 Function: Electro Thermal Autoclean
 Controls: Digital Touch
 Lighting: 2x1.5W LED lamp
 Filter: Baffle Filter
 Suction: 1500 m3/hr
 Width (mm): 600/900
 Blower: Metal Blower
 Oil Collector: Stainless Steel



FILTERLESS & AUTO CLEAN CHIMNEYS

ZEST

Description: Zest HC SC SS 60/90
 Finish: Black Tempered Glass with SS
 Function: Heat Autoclean
 Controls: 3 Speed Gesture
 Lighting: 2x1.5W LED lamp
 Filter: 1 Pc Baffle Filter
 Suction: 1100 m3/hr
 Width (mm): 600/900
 Blower: Metal Blower
 Oil Collector: Stainless Steel



JUPITER

Description: Jupiter HC SC BK 60/90,
 Jupiter Plus HC SC BK 60/90
 Finish: Black Tempered Glass with SS
 Function: Heat Autoclean
 Controls: 3 Speed Gesture
 Lighting: 2x1.5W LED lamp
 Filter: Cone Baffle Filter
 Suction: 1350/1500 m3/hr
 Width (mm): 600/900
 Blower: Metal Blower
 Oil Collector: Stainless Steel



NEPTUNE

Description: Neptune FLHC SC BK 90
 Finish: Black Tempered Glass with SS
 Function: Heat Autoclean
 Controls: 3 Speed Gesture
 Lighting: 2x1.5W LED lamp
 Filter: Filterless
 Suction: 1350 m3/hr
 Width (mm): 900
 Blower: Metal Blower
 Oil Collector: Stainless Steel



CLASSY

Description: Classy Energy HC BF TC 90
 Finish: Black Tempered Glass with SS
 Function: Electro Thermal Autoclean
 Controls: Touch
 Lighting: 2x1.5W LED lamp
 Filter: 1 Pc Baffle Filter
 Suction: 1500 m3/hr
 Width (mm): 900
 Oil Collector: Stainless Steel



RELISH TC/RELISH PB

Description: Relish HC BK TC/PB 76
 Finish: Black
 Function: Electro Thermal Autoclean
 Controls: Touch/Push Buttons
 Lighting: 2x1.5W LED lamp
 Filter: Cone Baffle Filter
 Suction: 1150 m3/hr
 Width (mm): 760
 Blower: Metal
 Oil Collector: Stainless Steel



INDUCTION HOBS



FBH 84 BK

Induction: 4 Zone
 Controls: Touch
 Min-max pan size: 110-265(mm)
 Power (W): 7100
 Voltage (V): 230
 Frequency (HZ): 50/60
 Product dimensions : 780x520 LxW (mm)
 Carcass dimensions : 750x490 LxW (mm)
 9 Power setting, 1-99min Timer min-max, Booster (P),
 Auto switch off, Over temperature protection, Over current or
 voltage abnormality protection, Container detection system,
 Auto shutdown protection, Power On indicator.



FBH 83 BK

Induction: 3 Zone
 Controls: Touch
 Min-max pan size: 110-265(mm)
 Power (W): 6400
 Voltage (V): 230
 Frequency (HZ): 50/60
 Product dimensions : 780x420 LxW (mm)
 Carcass dimensions : 760x380 LxW (mm)
 9 Power setting, 1-99min Timer min-max, Booster (P),
 Auto switch off, Over temperature protection, Over current or
 voltage abnormality protection, Container detection system,
 Auto shutdown protection, Power On indicator.



FBH 64 BK

Induction: 4 Zone
 Controls: Touch
 Min-max pan size: 110-265(mm)
 Power (W): 6400
 Voltage (V): 230
 Frequency (HZ): 50/60
 Product dimensions : 580x520 LxW (mm)
 Carcass dimensions : 560x490 LxW (mm)
 9 Power setting, 1-99min Timer min-max, Booster (P),
 Auto switch off, Over temperature protection, Over current or
 voltage abnormality protection, Container detection system,
 Auto shutdown protection, Power On indicator.



FBH 32 BK

Induction: 2 Zone
 Controls: Touch
 Min-max pan size: 110-265(mm)
 Power (W): 3400
 Voltage (V): 230
 Frequency (HZ): 50/60
 Product dimensions : 320x520 LxW (mm)
 Carcass dimensions : 290x495 LxW (mm)
 9 Power setting, 1-99min Timer min-max, Booster (P),
 Auto switch off, Over temperature protection, Over current or
 voltage abnormality protection, Container detection system,
 Auto shutdown protection, Power On indicator.



EUROPA 905 DT BR CIS BK

Width: 90cm
 Finish: Black Tempered Glass
 Pan Support: Cast Iron
 Knob: Black Metal
 Burners: 1 x 5Kw Multi Flame + 1 x 3Kw Large
 + 2 x 1.75Kw Medium + 1 x 1Kw Small
 Ignition: In-Built Auto Ignition
 Product dimensions: 860 x 510 x 130 LxWxH (mm)
 Carcass dimensions: 827 x 485 x 50 LxWxH (mm)
 Digital Cut-Off Timer, Kitchen Timer,
 Child Lock, Timer Per Burner, FFD (Flame Failure Device)



EUROPA 764 DT BR CIS BK

Width: 76cm
 Finish: Black Tempered Glass
 Pan Support: Cast Iron
 Knob: Black Metal
 Burners: 1 x 5Kw Multi Flame + 1 x 3Kw Large
 + 1 x 1.75Kw Medium + 1 x 1Kw Small
 Ignition: In-Built Auto Ignition
 Product dimensions: 760 x 510 x 130 LxWxH (mm)
 Carcass dimensions: 640 x 485 x 50 LxWxH (mm)
 Digital Cut-Off Timer, Kitchen Timer,
 Child Lock, Timer Per Burner, FFD (Flame Failure Device)



EUROPA 763 DT BR CIS BK

Width: 76cm
 Finish: Black Tempered Glass
 Pan Support: Cast Iron
 Knob: Black Metal
 Burners: 1 x 5Kw Multi Flame + 1 x 4Kw Triple Ring
 + 1 x 1.75Kw Medium
 Ignition: In-Built Auto Ignition
 Product dimensions: 760 x 510 x 130 LxWxH (mm)
 Carcass dimensions: 640 x 485 x 50 LxWxH (mm)
 Digital Cut-Off Timer, Kitchen Timer,
 Child Lock, Timer Per Burner, FFD (Flame Failure Device)



EUROPA 603 DT BR CIS BK

Width: 60cm
 Finish: Black Tempered Glass
 Pan Support: Cast Iron
 Knob: Black Metal
 Burners: 1 x 5Kw Multi Flame + 1 x 3Kw Large
 + 1 x 1Kw Small
 Ignition: In-Built Auto Ignition
 Product dimensions: 595 x 510 x 130 LxWxH (mm)
 Carcass dimensions: 564 x 485 x 50 LxWxH (mm)
 Digital Cut-Off Timer, Kitchen Timer,
 Child Lock, Timer Per Burner, FFD (Flame Failure Device)



DIGITAL TIMER
 DEFENDI BRASS BURNERS
 5KW MULTI FLAME BURNER
 TOUGHENED BLACK GLASS
 CAST IRON PAN SUPPORT
 FLAME FAILURE DEVICE
 CHILD LOCK

UTOPIA HT 905 BR CI

Width: 90 cm
 Ignition: In-Built Auto Ignition
 Pan Support: Cast Iron
 Burner: 5 Brass Burner
 with Black Enamel Coating
 Burners : 1 x 4 Kw Triple Ring Dual Flame
 +2 x 3 Kw Double Ring +2 x 1.7 Kw Double Ring
 Knob: Premium Metal Knobs With Golden Insets
 Safety Device: FFD (Flame Failure Device)
 Product dimensions: 865 x 525 x 130 LxWxH (mm)
 Carcass dimensions: 825 x 475 LxW (mm)



UTOPIA HT 903 BR CI

Width: 90 cm
 Ignition: In-Built Auto Ignition
 Pan Support: Cast Iron
 Burner: 3 Brass Burner
 with Black Enamel Coating
 Burners : 1 x 4 Kw Triple Ring Dual Flame
 +1 x 3 Kw Double Ring +1 x 1.7 Kw Double Ring
 Knob: Premium Metal Knobs With Golden Insets
 Safety Device: FFD (Flame Failure Device)
 Product dimensions: 900 x 525 x 130 LxWxH (mm)
 Carcass dimensions: 825 x 475 LxW (mm)



UTOPIA HT 804 BR CI

Width: 80 cm
 Ignition: In-Built Auto Ignition
 Pan Support: Cast Iron
 Burner: 4 Brass Burner
 with Black Enamel Coating
 Burners : 1 x 4 Kw Triple Ring Dual Flame
 +1 x 3 Kw Double Ring +2 x 1.7 Kw Double Ring
 Knob: Premium Metal Knobs With Golden Insets
 Safety Device: FFD (Flame Failure Device)
 Product dimensions: 800 x 525 x 130 LxWxH (mm)
 Carcass dimensions: 705 x 475 LxW (mm)



UTOPIA HT 783 BR CI

Width: 78 cm
 Ignition: In-Built Auto Ignition
 Pan Support: Cast Iron
 Burner: 3 Brass Burner
 with Black Enamel Coating
 Burners : 1 x 4 Kw Triple Ring Dual Flame
 +1 x 3 Kw Double Ring +1 x 1.7 Kw Double Ring
 Knob: Premium Metal Knobs With Golden Insets
 Safety Device: FFD (Flame Failure Device)
 Product dimensions: 780 x 525 x 130 LxWxH (mm)
 Carcass dimensions: 705 x 475 LxW (mm)



UTOPIA HT 604 BR CI

Width: 60 cm
 Ignition: In-Built Auto Ignition
 Pan Support: Cast Iron
 Burner: 4 Brass Burner
 with Black Enamel Coating
 Burners : 1 x 4 Kw Triple Ring Dual Flame
 +1 x 3 Kw Double Ring +2 x 1.7 Kw Double Ring
 Knob: Premium Metal Knobs With Golden Insets
 Safety Device: FFD (Flame Failure Device)
 Product dimensions: 595 x 525 x 130 LxWxH (mm)
 Carcass dimensions: 555 x 475 LxW (mm)

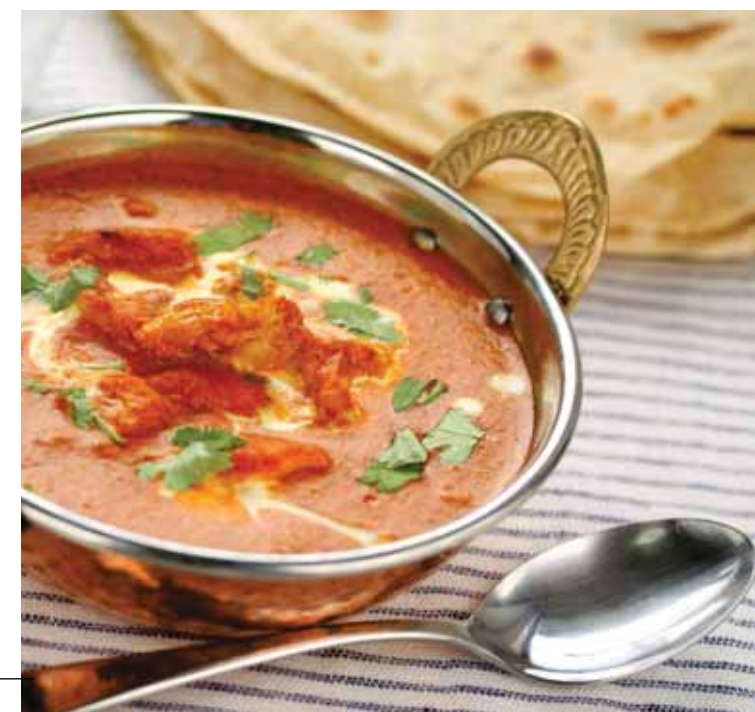


UTOPIA HT 603 BR CI

Width: 60 cm
 Ignition: In-Built Auto Ignition
 Pan Support: Cast Iron
 Burner: 3 Brass Burner
 with Black Enamel Coating
 Burners : 1 x 4 Kw Triple Ring Dual Flame
 +1 x 3 Kw Double Ring +1 x 1.7 Kw Double Ring
 Knob: Premium Metal Knobs With Golden Insets
 Safety Device: FFD (Flame Failure Device)
 Product dimensions: 595 x 525 x 130 LxWxH (mm)
 Carcass dimensions: 555 x 475 LxW (mm)



BRASS BURNERS
 4Kw DUAL FLAME BURNER
 TOUGHENED BLACK GLASS
 CAST IRON PAN SUPPORT
 FLAME FAILURE DEVICE
 PREMIUM METAL KNOBS WITH GOLDEN INSETS



NEXUS HOB COOKTOP HYBRIDS

NEXUS IND HT 803 CRS BR CI AI

Width: 80cm
 Finish: Black Tempered Glass
 Pan Support: Cast Iron
 Knob: Premium Metallic
 Burners: 2 x 3Kw Triple Ring + 1 x 1.7Kw Lotus Double Ring Brass Burner with Black Enamel Coating
 Ignition: In-Built Auto Ignition
 Product dimensions: 800 x 525 x 130 LxWxH (mm)
 Carcass dimensions: 705 x 475 x 50 LxWxH (mm)



NEXUS IND HT 784 CRS BR CI AI

Width: 78cm
 Finish: Black Tempered Glass
 Pan Support: Cast Iron
 Knob: Premium Metallic
 Burners: 2 x 3Kw Triple Ring + 2 x 1.7Kw Lotus Double Ring Brass Burner with Black Enamel Coating
 Ignition: In-Built Auto Ignition
 Product dimensions: 780 x 525 x 130 LxWxH (mm)
 Carcass dimensions: 685 x 475 x 50 LxWxH (mm)



NEXUS IND HT 783 CRS BR CI AI

Width: 78cm
 Finish: Black Tempered Glass
 Pan Support: Cast Iron
 Knob: Premium Metallic
 Burners: 1 x 3Kw Triple Ring + 2 x 1.7Kw Lotus Double Ring Brass Burner with Black Enamel Coating
 Ignition: In-Built Auto Ignition
 Product dimensions: 780 x 525 x 130 LxWxH (mm)
 Carcass dimensions: 685 x 475 x 50 LxWxH (mm)



NEXUS IND HT 905 CRS BR CI AI

Width: 90cm
 Finish: Black Tempered Glass
 Pan Support: Cast Iron
 Knob: Premium Metallic
 Burners: 3 x 3Kw Triple Ring + 2 x 1.7Kw Lotus Double Ring Brass Burner with Black Enamel Coating
 Ignition: In-Built Auto Ignition
 Product dimensions: 900 x 525 x 130 LxWxH (mm)
 Carcass dimensions: 825 x 475 x 50 LxWxH (mm)



NEXUS IND HT 904 CRS BR CI AI

Width: 90cm
 Finish: Black Tempered Glass
 Pan Support: Cast Iron
 Knob: Premium Metallic
 Burners: 2 x 3Kw Triple Ring + 2 x 1.7Kw Lotus Double Ring Brass Burner with Black Enamel Coating
 Ignition: In-Built Auto Ignition
 Product dimensions: 900 x 525 x 130 LxWxH (mm)
 Carcass dimensions: 825 x 475 x 50 LxWxH (mm)



NEXUS IND HT 604 CRS BR CI AI

Width: 60cm
 Finish: Black Tempered Glass
 Pan Support: Cast Iron
 Knob: Premium Metallic
 Burners: 2 x 3Kw Triple Ring + 2 x 1.7Kw Lotus Double Ring Brass Burner with Black Enamel Coating
 Ignition: In-Built Auto Ignition
 Product dimensions: 595 x 525 x 130 LxWxH (mm)
 Carcass dimensions: 555 x 475 x 50 LxWxH (mm)



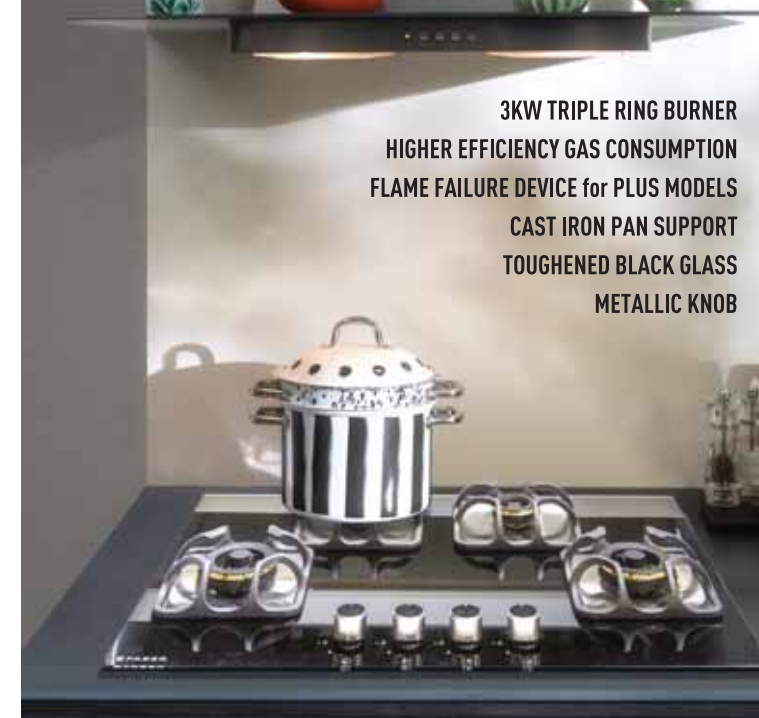
NEXUS HT 603 CRS BR CI AI

Width: 60cm
 Finish: Premium Metallic
 Pan Support: Cast Iron
 Knob: Black Metal
 Burners: 1 x 3Kw Triple Ring + 2 x 1.7Kw Lotus Double Ring Brass Burner with Black Enamel Coating
 Ignition: In-Built Auto Ignition
 Product dimensions: 595 x 525 x 130 LxWxH (mm)
 Carcass dimensions: 555 x 475 x 50 LxWxH (mm)



IMPERIA HOB COOKTOP HYBRIDS

3KW TRIPLE RING BURNER
HIGHER EFFICIENCY GAS CONSUMPTION
FLAME FAILURE DEVICE for PLUS MODELS
CAST IRON PAN SUPPORT
TOUGHENED BLACK GLASS
METALLIC KNOB



IMPERIA 905 BRB CI BK

Width: 90cm
 Finish: Black Tempered Glass
 Pan Support: Cast Iron
 Knob: Premium Metallic with Black Insets
 Burners: 3 x 3Kw Triple Ring Flame + 2 x 1.7Kw Double Ring
 Ignition: In-Built Auto Ignition
 Product dimensions: 900 x 525 LxW (mm)
 Carcass dimensions: 825 x 475 LxW (mm)



IMPERIA 784 BRB CI BK

Width: 78cm
 Finish: Black Tempered Glass
 Pan Support: Cast Iron
 Knob: Premium Metallic with Black Insets
 Burners: 2 x 3Kw Triple Ring Flame + 2 x 1.7Kw Double Ring
 Ignition: In-Built Auto Ignition
 Product dimensions: 780 x 525 LxW (mm)
 Carcass dimensions: 685 x 475 LxW (mm)



IMPERIA 783 BRB CI BK

Width: 78cm
 Finish: Black Tempered Glass
 Pan Support: Cast Iron
 Knob: Premium Metallic with Black Insets
 Burners: 1 x 3Kw Triple Ring Flame + 2 x 1.7Kw Double Ring
 Ignition: In-Built Auto Ignition
 Product dimensions: 780 x 525 LxW (mm)
 Carcass dimensions: 685 x 475 LxW (mm)



IMPERIA PLUS 784 BRB CI BK

Width: 78cm
 Finish: Black Tempered Glass
 Pan Support: Cast Iron
 Knob: Premium Metallic with Black Insets
 Safety Device: FFD (Flame Failure Device)
 Burners: 2 x 3Kw Triple Ring Flame + 2 x 1.7Kw Double Ring
 Ignition: In-Built Auto Ignition
 Product dimensions: 780 x 525 LxW (mm)
 Carcass dimensions: 685 x 475 LxW (mm)



IMPERIA PLUS 783 BRB CI BK

Width: 78cm
 Finish: Black Tempered Glass
 Pan Support: Cast Iron
 Knob: Premium Metallic with Black Insets
 Safety Device: FFD (Flame Failure Device)
 Burners: 1 x 3Kw Triple Ring Flame + 2 x 1.7Kw Double Ring
 Ignition: In-Built Auto Ignition
 Product dimensions: 780 x 525 LxW (mm)
 Carcass dimensions: 685 x 475 LxW (mm)



IMPERIA 604 BRB CI BK

Width: 60cm
 Finish: Black Tempered Glass
 Pan Support: Cast Iron
 Knob: Premium Metallic with Black Insets
 Burners: 2 x 3Kw Triple Ring Flame + 2 x 1.7Kw Double Ring
 Ignition: In-Built Auto Ignition
 Product dimensions: 595 x 525 LxW (mm)
 Carcass dimensions: 555 x 475 LxW (mm)



IMPERIA PLUS 604 BRB CI BK

Width: 60cm
 Finish: Black Tempered Glass
 Pan Support: Cast Iron
 Knob: Premium Metallic with Black Insets
 Safety Device: FFD (Flame Failure Device)
 Burners: 2 x 3Kw Triple Ring Flame + 2 x 1.7Kw Double Ring
 Ignition: In-Built Auto Ignition
 Product dimensions: 595 x 525 LxW (mm)
 Carcass dimensions: 555 x 475 LxW (mm)



IMPERIA 603 BRB CI BK

Width: 60cm
 Finish: Black Tempered Glass
 Pan Support: Cast Iron
 Knob: Premium Metallic with Black Insets
 Burners: 1 x 3Kw Triple Ring Flame + 2 x 1.7Kw Double Ring
 Ignition: In-Built Auto Ignition
 Product dimensions: 595 x 525 LxW (mm)
 Carcass dimensions: 555 x 475 LxW (mm)



**HIGH PERFORMANCE BURNERS 2.5 KW
AND 1.5 KW BURNER COMBINATION
CAST IRON PAN SUPPORT
TOUGHENED BLACK GLASS
PREMIUM METAL KNOBS WITH GOLDEN INSETS**



MAXUS HT 803 CRS BR CI AI

Width: 80 cm
Finish: 8 mm Black Tempered Glass
Burners: 1 x 2.5 Kw and 2 x 1.5 Kw
Brass Burner with Black Enamel Coating
Ignition: In-Built Auto Ignition with 1.5V DC Battery
Pan Support: Cast Iron
Knob: Premium Metallic with Golden Insets
Product dimensions: 800 x 525 x 145 LxWxH (mm)
Carcass dimensions: 705 x 325 LxW (mm)



MAXUS HT 784 CRS BR CI AI

Width: 78 cm
Finish: 8 mm Black Tempered Glass
Burners: 2 x 2.5 Kw and 2 x 1.5 Kw
Brass Burner with Black Enamel Coating
Pan Support: Cast Iron
Ignition: In-Built Auto Ignition with 1.5V DC Battery
Knob: Premium Metallic with Golden Insets
Product dimensions: 780 x 525 x 130 LxWxH (mm)
Carcass dimensions: 705 x 475 LxW (mm)



MAXUS HT 783 CRS BR CI AI

Width: 78 cm
Finish: 8 mm Black Tempered Glass
Burners: 1 x 2.5 Kw and 2 x 1.5 Kw
Brass Burner with Black Enamel Coating
Pan Support: Cast Iron
Ignition: In-Built Auto Ignition with 1.5V DC Battery
Knob: Premium Metallic with Golden Insets
Product dimensions: 780 x 525 x 130 LxWxH (mm)
Carcass dimensions: 705 x 475 LxW (mm)



MAXUS HT 905 CRS BR CI AI

Width: 86 cm
Finish: 8 mm Black Tempered Glass
Burners: 3 x 2.5 Kw and 2 x 1.5 Kw
Brass Burner with Black Enamel Coating
Ignition: In-Built Auto Ignition with 1.5V DC Battery
Pan Support: Cast Iron
Knob: Premium Metallic with Golden Insets
Product dimensions: 865 x 525 x 130 LxWxH (mm)
Carcass dimensions: 825 x 475 LxW (mm)



MAXUS HT 904 CRS BR CI AI

Width: 90 cm
Finish: 8 mm Black Tempered Glass
Burners: 2 x 2.5 Kw and 2 x 1.5 Kw
Brass Burner with Black Enamel Coating
Ignition: In-Built Auto Ignition with 1.5V DC Battery
Pan Support: Cast Iron
Knob: Premium Metallic with Golden Insets
Product dimensions: 900 x 525 x 145 LxWxH (mm)
Carcass dimensions: 825 x 475 LxW (mm)



MAXUS HT 604 CRS BR CI AI

Width: 60 cm
Finish: 8 mm Black Tempered Glass
Burners: 2 x 2.5 Kw and 2 x 1.5 Kw
Brass Burner with Black Enamel Coating
Ignition: In-Built Auto Ignition with 1.5V DC Battery
Pan Support: Cast Iron
Knob: Premium Metallic with Golden Insets
Product dimensions: 595 x 525 x 130 LxWxH (mm)
Carcass dimensions: 555 x 475 LxW (mm)



MAXUS HT 603 CRS BR CI AI

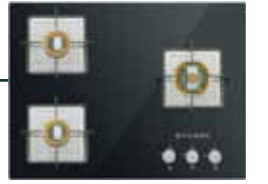
Width: 60 cm
Finish: 8 mm Black Tempered Glass
Burners: 1 x 2.5 Kw and 2 x 1.5 Kw
Brass Burner with Black Enamel Coating
Ignition: In-Built Auto Ignition with 1.5V DC Battery
Pan Support: Cast Iron
Knob: Premium Metallic with Golden Insets
Product dimensions: 595 x 525 x 130 LxWxH (mm)
Carcass dimensions: 555 x 475 LxW (mm)



**TRIPLE RING BURNER/DOUBLE RING BURNER
LOTUS BRASS BURNER/LOTUS BLACK BURNER
KNOB PROTECTOR PAN SUPPORT/GLASS EDGE PROTECTOR**

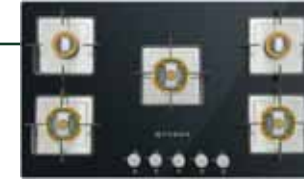
HTG 653 CRS BR CI/WH

Width: 65 cm
Finish: 8 mm Black/ White Tempered Glass
Pan Support: Knob Protector Enameled Grid
Knob: Premium Bakelite
Burners: 1 x Triple Ring + 2 x Double Ring Brass Burners
Ignition: In-Built Auto Ignition with 1.5V DC Battery
Product dimensions: 650 x 525 x 130 LxWxH (mm)
Carcass dimensions: 595 x 470 LxW (mm)



HTG 905 CRS BR CI

Width: 90 cm
Finish: 8 mm Black Tempered Glass
Pan Support: Knob Protector Enameled Grid
Knob: Premium Bakelite
Burners: 3 x Triple Ring + 2 x Double Ring Brass Burners
Ignition: In-Built Auto Ignition with 1.5V DC Battery
Product dimensions: 900 x 525 x 130 LxWxH (mm)
Carcass dimensions: 825 x 470 LxW (mm)



HCT 754 SR CRS LBK CI

Width: 75 cm
Finish: 8 mm Black Tempered Glass
Pan Support: Enameled Grid
Knob: Premium Bakelite
Burners: 2 Medium+2 Small Lotus Brass Burner with Black Enamel Coating
Ignition: In-Built Auto Ignition with 1.5V DC Battery
Product dimensions: 750 x 525 x 130 LxWxH (mm)
Carcass dimensions: 670 x 470 LxW (mm)



HTG 754 CRS BR CI

Width: 75 cm
Finish: 8 mm Black Tempered Glass
Pan Support: Knob Protector Enameled Grid
Knob: Premium Bakelite
Burners: 2 x Triple Ring + 2 x Double Ring Brass Burners
Ignition: In-Built Auto Ignition with 1.5V DC Battery
Product dimensions: 750 x 525 x 130 LxWxH (mm)
Carcass dimensions: 670 x 470 LxW (mm)



HCT 754 SR CRS LBK CI

Width: 75 cm
Finish: 8 mm Black Tempered Glass
Pan Support: Enameled Grid
Knob: Premium Bakelite
Burners: 2 Medium+ 1 Small Lotus Brass Burner with Black Enamel Coating
Ignition: In-Built Auto Ignition with 1.5V DC Battery
Product dimensions: 750 x 525 x 130 LxWxH (mm)
Carcass dimensions: 670 x 470 LxW (mm)



HTG 753 CRS BR CI

Width: 75 cm
Finish: 8 mm Black Tempered Glass
Pan Support: Knob Protector Enameled Grid
Knob: Premium Bakelite
Burners: 1 x Triple Ring + 2 x Double Ring Brass Burners
Ignition: In-Built Auto Ignition with 1.5V DC Battery
Product dimensions: 750 x 525 x 130 LxWxH (mm)
Carcass dimensions: 670 x 470 LxW (mm)



HCT 654 CRR LBK EI AI

Width: 65 cm
Finish: 8 mm Black/ White Tempered Glass
Pan Support: Enameled Grid
Knob: Premium Bakelite
Burners: 2 Medium+2 Small Lotus Brass Burner with Black Enamel Coating
Ignition: In-Built Auto Ignition with 1.5V DC Battery
Product dimensions: 650 x 525 x 130 LxWxH (mm)
Carcass dimensions: 595 x 470 LxW (mm)



HTG 654 CRS BR CI/ WH

Width: 65 cm
Finish: 8 mm Black/ White Tempered Glass
Pan Support: Knob Protector Enameled Grid
Knob: Premium Bakelite
Burners: 2 x Triple Ring + 2 x Double Ring Brass Burners
Ignition: In-Built Auto Ignition with 1.5V DC Battery
Product dimensions: 650 x 525 x 130 LxWxH (mm)
Carcass dimensions: 595 x 470 LxW (mm)



HCT 654 CRR LBK EI AI

Width: 65 cm
Finish: 8 mm Black/ White Tempered Glass
Pan Support: Enameled Grid
Knob: Premium Bakelite
Burners: 2 Medium+ 1 Small Lotus Brass Burner with Black Enamel Coating
Ignition: In-Built Auto Ignition with 1.5V DC Battery
Product dimensions: 650 x 525 x 130 LxWxH (mm)
Carcass dimensions: 595 x 470 LxW (mm)





GB 723 MT 2TR

Width: 72 cm
 Finish: 8 mm Black Tempered Glass
 Burners: 2 Mini Triple Ring Burners
 + 1 Medium Burner
 Ignition: In-Built Auto Ignition with 1.5V DC Battery
 Pan Support: Enameled Grid
 Knob: Premium Bakelite
 Product dimensions: 720 x 530 LxW (mm)
 Carcass dimensions: 575 x 480 LxW (mm)



FUSION 724 CRX BR CI

Width: 72 cm
 Finish: 8 mm Black Tempered Glass with SS
 Burners: 2 Triple Ring Burners
 + 2 Double Brass Burners
 Ignition: In-Built Auto Ignition with 1.5V DC Battery
 Pan Support: Enameled Grid
 Knob: Premium Bakelite
 Product dimensions: 720 x 510 LxW (mm)
 Carcass dimensions: 695 x 485 LxW (mm)



GB 724 SR 2MTC AUX

Width: 72 cm
 Finish: 8 mm Black Tempered Glass
 Burners: 2 Mini Triple Ring Burners
 + 1 Medium + 1 Small Burner
 Ignition: In-Built Auto Ignition with 1.5V DC Battery
 Pan Support: Knob Protector Enameled Grid
 Knob: Premium Bakelite
 Product dimensions: 720 x 530 LxW (mm)
 Carcass dimensions: 575 x 480 LxW (mm)



FUSION 723 CRX BR CI

Width: 72 cm
 Finish: 8 mm Black Tempered Glass with SS
 Burners: 2 Triple Ring Burners
 + 1 Double Brass Burners
 Ignition: In-Built Auto Ignition with 1.5V DC Battery
 Pan Support: Enameled Grid
 Knob: Premium Bakelite
 Product dimensions: 720 x 510 LxW (mm)
 Carcass dimensions: 695 x 485 LxW (mm)



GB 724 MT

Width: 72 cm
 Finish: 8 mm Black Tempered Glass
 Burners: 2 Mini Triple Ring Burners
 + 2 Medium Burners
 Ignition: In-Built Auto Ignition with 1.5V DC Battery
 Pan Support: Enameled Grid
 Knob: Premium Bakelite
 Product dimensions: 720 x 530 LxW (mm)
 Carcass dimensions: 575 x 480 LxW (mm)



MDR 700 MTX

Width: 72 cm
 Finish: Stainless Steel
 Burners: 1 Big & 1 Mini Triple Ring Burner
 + 1 Large & 1 Medium Burner
 Ignition: In-Built Auto Ignition with 1.5V DC Battery
 Pan Support: Enameled Grid
 Knob: Premium Bakelite
 Product dimensions: 720 x 500 LxW (mm)
 Carcass dimensions: 695 x 475 LxW (mm)



GB 723 MT

Width: 72 cm
 Finish: 8 mm Black Tempered Glass
 Burners: 1 Mini Triple Ring Burner
 + 2 Medium Burners
 Ignition: In-Built Auto Ignition with 1.5V DC Battery
 Pan Support: Enameled Grid
 Knob: Premium Bakelite
 Product dimensions: 720 x 530 LxW (mm)
 Carcass dimensions: 575 x 480 LxW (mm)



MDR 724 MTX

Width: 72 cm
 Finish: Stainless Steel
 Burners: 1 Big & 1 Mini Triple Ring Burner
 + 2 Medium Burners
 Ignition: In-Built Auto Ignition with 1.5V DC Battery
 Pan Support: Enameled Grid
 Knob: Premium Bakelite
 Product dimensions: 720 x 500 LxW (mm)
 Carcass dimensions: 695 x 475 LxW (mm)



FBIO 80L 10F BS

- 80 Ltr. Gross Oven Capacity
- A Class Energy efficiency
- Sensor touch control
- LED fully electronic display
- Auto Program
- Three layers glass door
- Cool touch glass
- Removable inner Glass
- Large viewing window
- 5 shelf positions
- Aluminum handle bar
- Enamel Interior for easy cleaning
- Side rack support • Rotisserie
- Digital clock with automatic cut off timer • Safety lock system
- With 10 heating methods • Conventional top and bottom heat
- Full surface grill /Fan Assisted grill
- Pizza/Bake/Fast cooking/Delicate cooking
- Top oven/Multi-Cooking/Defrosting



FBIMWO 38L CGS BS

- Usable Capacity 38 L
- Fully sensor touch control
- LED fully electronic display
- Cooking duration setting
- Door interlock (safety switch)
- Stainless steel cavity
- 1 light with 25 W
- 3 layers glass door
- Digital clock with automatic cut-off timer
- Large viewing window • Child lock system
- Microwave: Grilling, Convection,
- Microwave + Grilling, Microwave + Convection,
- Grilling + Convection • Defrost and Recipe
- Microwave + Grilling + Convection



The Finest cuisine perfected by you

Every part of your kitchen, every element, is a reflection of you. We at Faber understand this and that is why our innovations reflect you. Stylish craftsmanship and high-end technology come together to enable you to create culinary delights for you and your family.



FBI WD 6P TC BS

- 14 cm deep warming drawer, suitable for installation in a 60 cm high niche together with a 60 cm width steam oven, microwave Combi oven, or with a coffee machine Usable height approx.10 cm
- 6 place settings or 20 plates ø 28 cm or up to 80 Espresso cups or 40 Cappuccino cups (depending on size and style) Max. load 20 kg
- Hot air fan system for heating crockery
- Temperatures freely adjustable from approx.30°-80°
- Illuminated on / off switch
- 230 V, 50 Hz, 432 W
- Touch Control
- Telescopic full-depth pull-out with press + release Mechanism
- Anti slip mat
- Push-to-open-door
- Cool front



FPO 621 BK

- 60 cm • 83 Ltr. Oven Capacity
- Black Glass Finish
- Electric Multifunction Oven
- 10 Cooking Functions • Electronic Auto Program
- Memory Function • Sensor Touch Control
- Digital Timer • Cooling Fan
- Rotisserie • Electronic Child lock
- Oven Size (WxDxH) : 594 x 568 x 594 mm
- Carcass Size (WxDxH) : 565 min x 575 x 595 mm



FPO 621 SS

- 60 cm • 83 Ltr. Oven Capacity
- Black Glass with SS Trim Finish
- 10 Cooking Functions
- Electronic Auto Program
- Sensor Touch • Digital Timer
- Cooling Fan • Rotisserie
- Cavity with Easy to Clean enamel
- Oven Size (WxDxH) : 594 x 568 x 594 mm
- Carcass Size (WxDxH) : 565 min x 575 x 595 mm



FPO 671 SS

- 60 cm • 67 Ltr. Oven Capacity
- Stainless Steel with Glass Finish
- 8 Cooking Functions
- Round knob Type Interface
- Electronic timer • Auto Program
- Three layers glass door • Fat Filter
- Full glass Removable and Cool Inner Door plate
- Enamel Interior for easy cleaning
- Oven Size (WxDxH) : 594 x 568.8 x 594 mm
- Carcass Size (WxDxH) : 565 min x 575 x 595 mm



FPO 681 SS (Twin Oven)

- 60 cm • 83 Ltr. Oven Capacity
- Black Glass with SS Trim Finish
- 10 Cooking Functions • Fully Electronic Control
- White LCD fully electronic Display
- Sensor Touch and Knob Interface • Cooling Fan
- Rotisserie • Child Lock and Safety switch off
- Both upper and lower partition function
- Enamel Interior for easy cleaning
- Oven Size (WxDxH) : 594 x 568.8 x 594 mm
- Carcass Size (WxDxH) : 565 min x 575 x 595 mm



FPO 611 BK

- Capacity: 83 Ltr. • Black glass finish
- Digital Display • Electronic Child lock
- Sensor touch control with TFT display
- Speed Cook • Reminder Function
- Electronic Child lock • 10 Cooking Functions
- Enameled Interiors for easy Cleaning
- Forced cooling System
- Oven Size(W*D*H): 594 x 568.8 x 594 mm
- Carcass Size(W*D*H): 565 x 575min x 595mm



FBIO 65L 12F

- Capacity: 65 Ltr. • Fully Mirror glass finish
- Digital Display • Electronic Child lock
- Push-Pull knobs with Soft push buttons
- 'A' Class Energy efficiency • 24 Hrs Digital Timer
- Electronic Child lock • 12 Cooking Functions
- Enameled Interiors with Self-Cleaning
- Forced cooling System • Energy-Saving Function
- Oven Size(W*D*H): 595 x 575 x 595 mm
- Carcass Size(W*D*H): 560 x 575min x 600 mm



FBIO 67L 10F GLB

- 60 cm • 67 Ltr. Oven Capacity
- Black Finish
- Electric Multifunction Oven
- Energy Efficiency Class A -15%
- 10 Cooking Functions • Electronic Auto Program
- Memory Function • Sensor Touch Control
- Digital Timer • Cooling Fan
- Rotisserie • Electronic Child lock
- Oven Size (WxDxH): 594x545x594 mm
- Carcass Size(WxDxH): 560x560x575 mm



FBIO 80 L 10F GLM-Steamer

- 60 cm • 80 Ltr. Oven Capacity
- Electric Multifunction Oven
- Energy efficiency Class A
- Full Black Mirror Glass Finish
- 10 Cooking Functions • Electronic Auto Program
- Sensor Touch + Knob Control • Digital Timer
- Cooling Fan • Rotisserie
- Cavity with Easy to Clean enamel
- Chromed side racks with anti-tilt system
- Oven Size (WxDxH) : 594 x 545 x 594 mm
- Carcass Size (WxDxH) : 560 x 560 x 575 mm



FBIO 80 L 8F

- 60 cm • 80 Ltr. Oven Capacity
- Electric Multifunction Oven
- A Class Energy efficiency • 8 Cooking Functions
- Touch + Push / Pull Knob Control • Digital Display
- Electronic timer • Auto Program
- Three layers glass door • Cool touch glass
- 5 shelf positions • Side rack support
- Enamel Interior for easy cleaning
- Oven Size (WxDxH): 594x548x594 mm
- Carcass Size(WxDxH): 560x560x575 mm



FBIO 80L 6F

- 60 cm • 80 Ltr. Oven Capacity
- Electric Multifunction Oven
- A Class Energy efficiency • 6 Cooking Functions
- Knob Control • Mechanical timer
- Convection Fan • Cooling Fan • Rotisserie
- Three layers glass door • Cool touch glass
- 5 shelf positions • Side rack support
- Enamel Interior for easy cleaning
- Oven Size (WxDxH): 594x548x594 mm
- Carcass Size(WxDxH): 560x560x575 mm



FBIO 80L 4F

- 60 cm • 80 Ltr. Oven Capacity
- Electric Multifunction Oven
- A Class Energy efficiency • 4 Cooking Functions
- Knob Control • Mechanical timer
- Convection Fan • Three layers glass door
- Cool touch glass • 5 shelf positions
- Enamel Interior for easy cleaning
- Oven Size (WxDxH): 594x548x594 mm
- Carcass Size(WxDxH): 560x560x575 mm



FPM 611BK

- Width 60cm
- Full Black finish
- Sensor touch control with TFT display
- 38 liter gross capacity
- MWO + Grill + Convection functions
- Digital timer with auto cut off
- Auto cook menus
- Oven Size: W*D*H: 594*486*455mm
- Carcass Size: W*D*H: 565*600*448-452mm



BUILT-IN MICROWAVE OVENS

FPM 621 BK

- Width 60cm • Capacity: 38 L
- Black Glass finish
- Sensor touch control
- MWO + Grill + Convection functions
- Digital timer with auto cut off
- Auto cook menus
- Oven Size: W*D*H: 594*486*455mm
- Carcass Size: W*D*H: 565*600*452mm



MAM 82M XS

- Width 90cm • Capacity: 66 L
- Stainless Steel and Glass
- Electronic knob control
- 10 cooking functions
- Digital timer with auto cut off
- MWOven Size - W*D*H: 895*565*475mm
- Carcass Size - W*D*H: 865*min 560*475mm



FPM 621 SS

- Width 60cm • Capacity: 38 L
- Stainless Steel and Glass finish
- Sensor touch control
- MWO + Grill + Convection functions
- Digital timer with auto cut off
- Auto cook menus
- Oven Size: W*D*H: 594*486*455mm
- Carcass Size: W*D*H: 565*600*452mm



FBIMWO 32L CGS

- Width 60cm • Capacity: 32 L
- Finish: Stainless Steel
- Grill + Convection
- 10 Auto Cook Menus
- Defrost • Combination Cooking
- Digital Timer • Electronic Control
- Child Safety Lock
- MWO Size (L*W*H): 595*480*388 mm
- Carcass Dimension (L*W*H): 568*550 min*382 mm



FBIMWO 38L GLM

- Width 60cm • Capacity: 38L
- Finish: Mirror Glass
- Microve + Grill + Convection
- Grill + Convection • Conviction • Grill
- Defrost • Recipe • Combination Cooking
- Digital Timer • Electronic Push Button Control
- MWO Size (W*D*H): 594*530*455 mm
- Carcass Dimension (W*D*H): 558-565*600 *448-452 mm



FBIMWO 25L CGS BK/ WH

- Width 60cm • Capacity: 25 L
- Finish: Black/ White
- Grill + Convection
- 10 Auto Cook Menus
- Defrost • Combination Cooking
- Digital Timer • Electronic Control
- Child Safety Lock
- MWO Size (L*W*H): 594*470*388 mm
- Carcass Dimension (L*W*H): 560*550 min*380 mm



FBIMWO 32L GLB

- Width 60cm • Capacity: 32 L
- Finish: Black • Grill + Convection
- 10 Auto Cook Menus
- Defrost • Combination Cooking
- Digital Timer • Electronic Control
- Child Safety Lock
- MWO Size (L*W*H): 595*477*388 mm
- Carcass Dimension (L*W*H): 568*550 min*382 mm



FBI MWO 25L CGS

- Width 60cm • Capacity: 25 L
- Finish: Stainless Steel
- Grill + Convection
- 10 Auto Cook Menus
- Defrost • Combination Cooking
- Digital Timer • Electronic Push Button Control
- MWO Size (L*W*H): 594*470*388 mm
- Carcass Dimension (L*W*H): 560*550 min*380 mm



FBIMWO 32L GLW

- Width 60cm • Capacity: 32 L
- Finish: White • Grill + Convection
- 10 Auto Cook Menus
- Defrost • Combination Cooking
- Digital Timer • Electronic Control
- Child Safety Lock
- MWO Size (L*W*H): 595*477*388 mm
- Carcass Dimension (L*W*H): 568*550 min*382 mm



FBIMWO 20L SG

- Width 60cm • Capacity: 20 L
- Finish: Stainless Steel
- Grill • 10 Auto Cook Menus
- Defrost • Combination Cooking
- Digital Timer • Electronic Control
- Child Safety Lock
- MWO Size (L*W*H): 595*343.5*382 mm
- Carcass Dimension (L*W*H): 560*340 min*362 mm



COOKING RANGES



FCR 44L 4B 4FBK

- Width: 50cm
- Finish: Black
- Oven Capacity: 44 liters
- 4 Burners: 1 Large + 2 Medium + 1 Small
- Gas Grill
- Push Button Ignition for Burners and Oven
- Enamel Grid
- Enamel Interior for Easy Cleaning
- Size(W*D*H): 500 x 500 x 890 mm



FCR 52L 4B BEG

- Width: 55cm
- Finish: Stainless Steel
- Oven Capacity: 52 liters
- 4 Burners: 1 Mini Triple Ring 2.5Kw + 1 Large 3Kw + 2 Medium 1.75Kw
- Gas Grill
- Auto Ignition for Burners and Oven
- Digital Timer
- Enamel Grid
- Enamel Interior for Easy Cleaning
- Size(W*D*H): 555 x 570 x 890 mm



FCR 53L 4B CIR

- Width: 60cm
- Finish: Stainless Steel
- Oven Capacity: 53 liters
- 4 Burners: 1 Triple Ring 4Kw + 1 Large 3Kw + 2 Medium 1.75Kw
- Gas Grill
- Rotisserie
- Auto Ignition for Burners & Oven
- Digital Timer
- Enamel Grid
- Enamel Interior for Easy Cleaning
- Size(W*D*H): 595 x 600 x 855 mm



FCR 114L 5B HECIR

- Width: 90cm
- Finish: Stainless Steel
- Oven Capacity: 114 liters
- 5 Burners: 1 Triple Ring 4Kw + 1 Mini Triple Ring 2.5Kw + 1 Large 3Kw + 2 Medium 1.75Kw
- Gas Grill
- Rotisserie
- Auto Ignition for Burners and Oven
- Digital Timer
- Cast Iron Grid
- Enamel Interior for Easy Cleaning
- Size(W*D*H): 900 x 600 x 890 mm





FSID 8PR 14S (Semi Integration)

- 8 Washing Programs
- 14 Place capacity
- SS Finish
- Dual Zone Wash
- Power Memory
- Child safety Lock
- Power wash/Extra drying/Express
- LED Display
- Natural Drying
- 1-24 hours Delay
- Salt and rinse aid indicators
- Electronic Aqua Stop
- A+++/A/A (energy, cleaning, drying)
- Product Dimension (H*W*D mm): 845*598*600
- Carcass Dim. (H* W*D in mm) : 890*645*645



FFSD 8PR 14S

- 8 Washing Programs
- 14 Place capacity
- Stainless Steel Finish
- Dual Zone Wash
- Power Memory
- Child safety Lock
- Power wash/Extra drying/Express
- LED Display
- Natural Drying
- 1-24 hours Delay
- Salt and rinse aid indicators
- Electronic Aqua Stop
- A+++/A/A (energy, cleaning, drying)
- Product Dimension (H*W*D mm): 845*598*600



FFSD 8PR 14S BK

- 8 Washing Programs
- 14 Place capacity
- Black Finish
- Dual Zone Wash
- Power Memory
- Child safety Lock
- Power wash/Extra drying/Express
- LED Display
- Natural Drying
- 1-24 hours Delay
- Salt and rinse aid indicators
- Electronic Aqua Stop
- A+++/A/A (energy, cleaning, drying)
- Product Dimension (H*W*D mm): 845*598*600



FFSD 6PR 12S Neo Inox

- 6 Washing Programs
- 12 Place capacity
- Neo Inox Finish
- Half load
- Power Memory
- Electronic Push button control
- Display
- Natural Drying
- 1-24 hours Delay
- Salt and rinse aid indicators
- Self Clean
- Self Clean Filter System
- A++/A/A (energy, cleaning, drying)
- Product Dimension (H*W*D mm): 845*598*600



FBID 8PR 14S (Built-in)

- 8 Washing Programs
- 14 Place capacity
- SS Finish
- Dual Zone Wash
- Power Memory
- Auto Wash
- Extra Drying
- LED Display
- Natural Drying
- 1-24 hours Delay
- Salt and rinse aid indicators
- Electronic Aqua Stop
- A++/A/A (energy, cleaning, drying)
- Product Dimension (H*W*D mm): 815*598*550
- Carcass Dim. (H X W X D in mm) : 820-865 *600 *580



3D
Oil Clean
Technology



3 Spray Arms generate 360 degree water spray, at high pressure, providing perfect cleaning results.



FFSD 6PR 12S BK

- 6 Washing Programs
- 12 Place capacity
- Black Finish
- Half load
- Power Memory
- Electronic Push button control
- Display
- Natural Drying
- 1-24 hours Delay
- Salt and rinse aid indicators
- Self Clean Filter System
- A++/A/A (energy, cleaning, drying)
- Product Dimension (H*W*D mm): 845*598*600



FFSD 6PR 8S Ace White

- 6 Washing Programs
- 8 Place Capacity
- White Finish
- Half load
- Power Memory
- Electronic Push button control
- LED Display
- Natural Drying
- 1-24 hours Delay
- Salt and rinse aid indicators
- Self Clean Filter System
- A+/A/A (energy, cleaning, drying)
- Product Dim. (H X W X D in mm) : 595*550*500
- Carcass Dim. (H X W X D in mm) : 662*605*555



FFSD 6PR 12S Neo Black

- 6 Washing Programs
- 12 Place capacity
- Neo Black Finish
- Half load
- Power Memory
- Electronic Push button control
- Display
- Natural Drying
- 1-24 hours Delay
- Salt and rinse aid indicators
- Self Clean
- Self Clean Filter System
- A++/A/A (energy, cleaning, drying)
- Product Dimension (H*W*D mm): 845*598*600



FFSD 6PR 8S Ace Black

- 6 Washing Programs
- 8 Place Capacity
- Black Finish
- Half load
- Power Memory
- Electronic Push button control
- LED Display
- Natural Drying
- 1-24 hours Delay
- Salt and rinse aid indicators
- Self Clean Filter System
- A+/A/A (energy, cleaning, drying)
- Product Dim. (H X W X D in mm) : 595*550*500
- Carcass Dim. (H X W X D in mm) : 662*605*555



FFSD 6PR 12S Neo White

- 6 Washing Programs
- 12 Place capacity
- Neo White Finish
- Half load
- Power Memory
- Electronic Push button control
- Display
- Natural Drying
- 1-24 hours Delay
- Salt and rinse aid indicators
- Self Clean
- Self Clean Filter System
- A++/A/A (energy, cleaning, drying)
- Product Dimension (H*W*D mm): 845*598*600



FFSD 6PR 8S Ace Inox

- 6 Washing Programs
- 8 Place Capacity
- Inox Finish
- Half load
- Power Memory
- Electronic Push button control
- LED Display
- Natural Drying
- 1-24 hours Delay
- Salt and rinse aid indicators
- Self Clean Filter System
- A+/A/A (energy, cleaning, drying)
- Product Dim. (H X W X D in mm) : 595*550*500
- Carcass Dim. (H X W X D in mm) : 662*605*555





**SUPER
SAVER
OFFER**



SAVE YOUR HOME FROM DANGERS OF GAS LEAKS.

STATE-OF-THE-ART FABER RANGE OF COOKTOPS WITH EUROPEAN GAS VALVES KEEPS YOUR KITCHEN SAFE.



SUPREME PLUS XL

- Brush Steel Finish Frame
- 4 Burner Brass: 1 Small+2 Medium + 1 Jumbo Burner
- Heat Resistant Euro Coating
- Square Pan Support
- Removable Square Drip Tray
- Size (LxWxH): 890x360x55mm
- Available in Auto Ignition Also



SUPREME PLUS 4BB AI/4BB

- Brush Steel Finish Frame
- 4 Burner Brass: 1 Small+2 Medium + 1 Jumbo Burner
- Heat Resistant Euro Coating
- Square Pan Support
- Removable Square Drip Tray
- Auto Ignition: Push & Hold/ Non AI
- Size (LxWxH): 635x500x55mm



SUPREME PLUS 3BB AI/3BB

- Brush Steel Finish Frame
- 3 Burner Brass: 1 Small+1 Medium + 1 Jumbo Burner
- Heat Resistant Euro Coating
- Square Pan Support
- Removable Square Drip Tray
- Auto Ignition: Push & Hold/ Non AI
- Size (LxWxH): 770x380x55mm



SPACEX 4BB BK CI

- Space Frame with Diamond Coating
- 4 Burners : 1 Small+2 Medium+ 1 Jumbo
- Diamond Coated Crown Design Pan Support
- Screw less Diamond Coated Drip Tray
- 90-100 Gms Machined Brass Valve with Safety Caps
- Size(LxWxH): 630 x 500
- 8mm Toughened Glass AL Profile



SPACEX 3BB BK CI

- Space Frame with Diamond Coating
- 3 Burners : 1 Small+1 Medium + 1 Jumbo
- Diamond Coated Crown Design Pan Support
- Screw less Diamond Coated Drip Tray
- 90-100 Gms Machined Brass Valve with Safety Caps
- Size(LxWxH): 770 x 380
- 8mm Toughened Glass AL Profile



ONYX 4BB BK CI

- Black Powder Coated Frame
- 4 Brass Burner
- Diamond Coated Pan Support
- Diamond Coated Drip Tray
- Size(LxWxH): 635x500x50 mm



ONYX 3BB BK CI

- Black Powder Coated Frame
- 3 Brass Burner
- Diamond Coated Pan Support
- Diamond Coated Drip Tray
- Size(LxWxH): 770x380x50 mm



NIOS 5B BK

- Slim Type with Black Matt Finish Frame
- 5 Brass Burner: 1 Small+2 Medium+2Jumbo
- Diamond Coated 5mm Grid Pan Support
- Diamond Coated Drip Tray
- Toughened Glass Size(LxWxH): 900x510x8mm



NIOS PRO 5B WH

- Slim Type with Black Matt Finish Frame
- 5 Brass Burner: 1 Small+2 Medium+2Jumbo
- Diamond Coated 5mm Grid Pan Support
- Diamond Coated Drip Tray
- Toughened Glass Size(LxWxH): 900x510x8mm



NIOS PRO 4B BK

- Slim Type with Black Matt Finish Frame
- 4 Brass Burner: 1 Small+2 Medium +1 Jumbo
- Diamond Coated 5mm Grid Pan Support
- Diamond Coated Drip Tray
- Toughened Glass Size(LxWxH): 750x510x8mm



NIOS 4B BK

- Slim Type with Black Matt Finish Frame
- 4 Brass Burner: 1 Small+2 Medium+1 Jumbo
- Diamond Coated 5mm Grid Pan Support
- Diamond Coated Drip Tray
- Toughened Glass Size(LxWxH): 750x510x8mm



NIOS PRO 3B BK

- Slim Type with Black Matt Finish Frame
- 3 Brass Burner: 1 Small+1 Medium +1 Jumbo
- Diamond Coated 5mm Grid Pan Support
- Diamond Coated Drip Tray
- Toughened Glass Size(LxWxH): 650x510x8mm



NIOS 3B BK

- Slim Type with Black Matt Finish Frame
- 3 Brass Burner: 1 Small+1 Medium +1 Jumbo
- Diamond Coated 5mm Grid Pan Support
- Diamond Coated Drip Tray
- Toughened Glass Size(LxWxH): 650x510x8 mm



NIOS 3B WH

- Slim Type with Black Matt Finish Frame
- 3 Brass Burner: 1 Small+1 Medium +1 Jumbo
- Diamond Coated 5mm Grid Pan Support
- Diamond Coated Drip Tray
- Toughened Glass Size(LxWxH): 650x510x8 mm



NIOS PRO 753 BK

- Slim Type with Black Matt Finish Frame
- 3 Brass Burner: 1 Small+1 Medium +1 Jumbo
- Diamond Coated 5mm Grid Pan Support
- Diamond Coated Drip Tray
- Toughened Glass Size(LxWxH): 750x510x8mm



NIOS PRO 654 BK

- Slim Type with Black Matt Finish Frame
- 4 Brass Burner: 1 Small+2 Medium +1 Jumbo
- Diamond Coated 5mm Grid Pan Support
- Diamond Coated Drip Tray
- Toughened Glass Size(LxWxH): 650x510x8mm



CURVO MIRROR 4BB SS

- Brush Steel Finish Frame
- 4 Brass Burner: 1 Small + 2 Medium + 1 Jumbo
- Heat Resistant Euro Coating
- Round Pan Support
- Removable Round Drip Tray
- Size(LxWxH): 630x510x55 mm



CURVO MIRROR 3BB SS

- Brush Steel Finish Frame
- 3 Brass Burner: 1 Small + 1 Medium + 1 Jumbo
- Heat Resistant Euro Coating
- Round Pan Support
- Removable Round Drip Tray
- Size(LxWxH): 770x370x55 mm



ELITE 4BB BK CI

- Frame: Black Matt
- 4 Brass Burners: Forged Burners With Logo (1 Small + 2 Medium+ 1 Jumbo)
- Pan support: 800 GMs Diamond Coated
- Tray: Black Enameled
- Size (LxWxH): 640x 510x 55 mm



ELITE 2BB BK CI

- Black Matt Frame
- 2 Brass Burners: Forged Burners With Logo (1 Small + 1 Jumbo)
- Pan support: 800 GMs Diamond Coated
- Tray: Black Enameled
- Size (LxWxH): 650x 380x 55 mm



MARVELLOUS 3B BK AI

- Black Finish Frame
- 3 Brass Burners: 1 small + 1 medium + 1 jumbo
- Heat resistant euro coating square Pan support
- Removable square drip tray
- Ignition: Auto
- Size (LxWxH): 770x450x55 mm



JUMBO 4BB SS

- Stainless Steel Finish Frame
- 4 Brass Burner:
1 Small + 2 Medium + 1 Jumbo
- Powder Coated Round Pan Support
- Double Round Drip Tray
- Size (LxWxH): 635x500x55 mm



JUMBO 3BB SS

- Stainless Steel Finish Frame
- 3 Brass Burner:
1 Small + 1 Medium + 1 Jumbo
- Powder Coated Round Pan Support
- Double Round Drip Tray
- Size (LxWxH): 770x380x55 mm



JUMBO 4BB BK

- Black Powder Coated Frame
- 4 Brass Burner:
1 Small + 2 Medium + 1 Jumbo
- Powder Coated Round Pan Support
- Double Round Drip Tray
- Size (LxWxH): 635x500x55 mm
- Also Available in Auto Ignition Push Button



JUMBO 3BB BK

- Black Powder Coated Frame
- 3 Brass Burner:
1 Small + 1 Medium + 1 Jumbo
- Powder Coated Round Pan Support
- Double Round Drip Tray
- Size (LxWxH): 770x360x55 mm
- Also Available in Auto Ignition Push Button



POWER 4BB BK

- Black Powder Coated Frame
- 4 Brass Burner:
1 Small + 2 Medium + 1 Large
- Powder Coating Round Pan Support
- Fixed Round Drip Tray
- Size(LxWxH): 585x500x55 mm



POWER 3BB BK

- Black Powder Coated Frame
- 3 Brass Burner:
1 Small + 1 Medium + 1 Large
- Powder Coating Round Pan Support
- Fixed Round Drip Tray
- Size(LxWxH): 690x360x55 mm



POWER 2BB BK

- Black Powder Coated Frame
- 2 Brass Burner: 1 Medium + 1 Large
- Powder Coating Round Pan Support
- Fixed Round Drip Tray
- Size(LxWxH): 600x290x55 mm



SPLENDOR 4BB SS AI

- Brush Steel Finish Frame
- 4 Brass Burner:
1 Small + 2 Medium + 1 Large
- Auto Ignition Push Button
- Powder Coating Round Pan Support
- Fixed Round Drip Tray
- Size(LxWxH): 585x500x55 mm



SPLENDOR 3BB SS AI

- Brush Steel Finish Frame
- 3 Brass Burner:
1 Small + 1 Medium + 1 Large
- Auto Ignition Push Button
- Powder Coating Round Pan Support
- Fixed Round Drip Tray
- Size(LxWxH): 690x360x55 mm



GRAND 4BB BK

- Black Powder Coated Frame
- 4 Brass Burner: 2 Small+2 Medium
- Powder Coating Round Pan Support
- Fixed Round Drip Tray
- Size(LxWxH): 585x500x55 mm



GRAND 3BB BK

- Black Powder Coated Frame
- 3 Brass Burner: 1 Small+2 Medium
- Powder Coating Round Pan Support
- Fixed Round Drip Tray
- Size(LxWxH): 690x360x55 mm



SHINE PLUS 4BB BK

- Black Powder Coated Frame
- 4 Brass Burner: 2 Medium + 2 Small
- Powder Coated Round Pan Support
- Fixed Round Drip Tray
- Size (LxWxH): 585x500x55mm



SHINE PLUS 3BB BK

- Black Powder Coated Frame
- 3 Brass Burner: 2 Medium + 1 Small
- Powder Coated Round Pan Support
- Fixed Round Drip Tray
- Size (LxWxH): 690x360x55mm



JAZZ 2BB BK

- Black Powder Coated Frame
- 2 Brass Burner: 1 Medium + 1 Small
- Powder Coated Round Pan Support
- Fixed Round Drip Tray
- Size (LxWxH): 600x290x55mm



ALTROZ

- RO + UV + UF + MAT + Mineral Filter Filtration
- 10 Liters (Gross Volume) Storage Tank
- 9 Stage of Filtration :
• Sediment-1
• Sediment-2
• Pre Carbon
• Heavy Duty RO Membrane (Made In USA)
• Post Carbon
• Inside Post Carbon MAT* Filter
• Mineral Filter
• UF Membrane
• UV Filter
• 3000*PPM TDS# Filtration Limit
• Water Level Indicator



NEUTRON PLUS

- RO + UV + UF + CU Guard + pH Enhancer Filtration
- 10 Liters (Gross Volume) Storage Tank
- 9 Stage of Filtration
• External Sediment-1
• Sediment-2
• Pre Carbon
• CSM 80 GPD RO Membrane
• Post Carbon
• UF Membrane
• UV Filter
• Copper Guard
• pH Enhancer
• 2500*PPM TDS# Filtration Limit
• Water Level Indicator
• Tank Full Indicator



NEUTRON ELITE

- RO + UV + CU Guard + pH Enhancer Filtration
- 10 Liters (Gross Volume) Storage Tank :
- 8 Stage of Filtration :
• External Sediment
• Sediment-2
• Pre Carbon
• CSM 80 GPD RO Membrane
• Post Carbon
• UV Filter
• Copper Guard
• pH Enhancer
• 2500*PPM TDS# Filtration Limit
• Water Level Indicator
• Tank Full Indicator



CASPER PLUS

- RO + UV + CU Guard Filtration
- 10 Liters (Gross Volume) Storage Tank
- 7 Stage of Filtration :
• External Sediment
• Sediment-2
• Pre Carbon
• 80 GPD RO Membrane
• Post Carbon
• UV Filter
• Copper Guard
• 2500*PPM TDS# Filtration Limit
• Water Level Indicator
• Tank Full Indicator



CASPER DLX

- RO + UV + MAT Filtration
- 10 Liters (Gross Volume) Storage Tank
- 7 Stage of Filtration
• External Sediment
• Sediment-2
• Pre Carbon
• 80 GPD RO Membrane:
• Post Carbon
• Inside Post Carbon MAT* Filter
• UV Filter
• 2500*PPM TDS# Filtration Limit
• Water Level Indicator
• Tank Full Indicator



UTS PT PRO (RO+UV)

- RO+UV Filtration
- 15 Liters (Gross Volume) Storage Tank
- 6 Stage No Of Filtration :
• Sediment-1
• Sediment-2
• Pre Carbon
• CSM 80 GPD RO Membrane
• Post Carbon
• 2500*PPM TDS# Filtration Limit
• >12LPH@25°C, 20 PSI, TDS 750PPM Filtration Capacity
• 1.6LPM RO Booster Pump



**MAKE THE RIGHT CHOICE.
CHOOSE THE SAFER GEYSER.**

PRESENTING FABER GEYSERS
WITH 12 SAFETY FEATURES



*5-Star BEE Standard

* TC Apply



ANTI SHOCK ■ PRESSURE RESIST ■

12 SAFETY FEATURES



Single Weld Line



5-Bolt Flange



Quadro-Layer



High Working Pressure



High Precision Thermostat



MFV (Extreme Condition)



Resistor Mg Anode



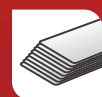
Thermal Cutout



Glaslined Element



No Water Leakages Even Coating Across Area



Low Carbon CRCA Sheet for better strength



Girth Welding

VULCAN

- FWG Vulcan 6V, FWG Vulcan 10V, FWG Vulcan 15V, FWG Vulcan 25V
- 6L, 10L, 15L, 25L Capacity
- Vertical Installation
- White Color
- Heating indicator
- Variable Adjustment (30-75 Degree C) Controls
- Laminated- Plastic Polyapp (PP) Outer Cover
- 2000W Rated power input
- 230V Rated Voltage
- 16 Ampere Rated input current • 50 Hz Rated Frequency
- 5 Star Rating Rated Star Rating • CRCA EDD Grade Tank material
- MFV Safety valve • Thermostat • Thermal cut off



INSTA

- FWG INSTA 1L (3KW), FWG INSTA 1L (4.5KW), FWG INSTA 3L (3KW), FWG INSTA 3L (4.5KW)
- 1L, 3L Capacity
- Vertical Installation
- White Color
- Heating indicator
- Fixed Control (55 Degree C) Controls
- Plastic Outer Cover
- 3000 W, 4500 W Rated power input
- 230 V Rated Voltage
- 16 Ampere Rated input current • 50Hz Rated Frequency
- SS TANK (304 grade) Tank material
- PRV Safety valve • Thermostat • Thermal cut off



**YOU AND YOUR FAMILY...
NOW SAFER WITH
FABER**



OXPURE 10

- Seafoam / Blonde / Indigo / Iris Colour
- 10 Liters Capacity
- ABS Material
- 230V 50Hz, AC Power Supply
- 1.5 Meters Power Cord
- Plug & Play Type
- Table Mounted Installation
- 1.45 Kgs Product Weight
- Dimension (L*W*H): 330*270*320 mm



Available Colour



FASD 1L SS

- 1 Liter Capacity:
- Stainless Steel, SS 430 Material
- Plastic, HDPE/PET Storage
- AC 230V Power Supply
- 1.5 Meters Power Cord
- Plug & Play Type
- Wall Mounted Installation
- Suitable for Alcohol Based Liquid Dispenser Only



FASD 2L SS

- 2 Liter Capacity:
- Stainless Steel, SS 430 Material
- Plastic, HDPE/PET Storage
- AC 230V Power Supply
- 1.5 Meters Power Cord
- Plug & Play Type
- Wall Mounted Installation
- Suitable for Alcohol Based Liquid Dispenser Only



FASD 5L SS

- 5 Liter Capacity
- Stainless Steel, SS 430 Material
- Plastic, HDPE/PET Storage
- AC 230V Power Supply
- 1.5 Meters Power Cord
- Plug & Play Type
- Wall Mounted Installation
- Suitable for Alcohol Based Liquid Dispenser Only



FASD 2L 3-in-1

- 2 Liters Capacity
- Plastic, HDPE/PET Material
- Dual, Battery Operated & 5V DC Power Supply
- 1 Meter Without Charger Socket Charging Cable
- Plug & Play Type
- Dual, Table Top or Wall Mounted Installation
- 3-in-1 Dispenser with option of dispensing Liquid, High Viscous Gel and Soap
- Wall Mounting Plastic Stand Unit as Accessories with the product



FDS CARE PLUS-FR

- 220 V-, 50 Hz Rated Voltage
- 100 W Rated Power
- 0.69 kg Net weight
- Protection from dust
- Removes bacteria & viruses
- Multi functional foldable UV Box
- 310 mm x 60 mm Product size (Folding)
- 310 mm x 160 mm Product size (Unfolding)
- 3 in 1 (UV Sterilization + Pasteurization + Cloth dryer)
- A cloth dryer (360 degree cycle drying)
- Aroma Therapy (Removes odour)
- 254 to 260 nm range powerfully germicidal
- Portable & compact design
- Unlike chemical treatments, the process of UV disinfection is environmentally friendly



FDS CARE PRO

- DC 5V / 2Amp Rated Input
- 100 W Rated Power
- 0.5 Kg Net weigh
- 245x200x170mm Product size
- Type-C or USB Input interface
- 0-40°C Working Temperature
- -20-55°C Storage Temperature
- Full UV disinfection of upper and lower double layers
- Removes bacteria & viruses within 3 minutes
- 254 to 260 nm range powerfully germicidal
- Portable & compact design
- Unlike chemical treatments, the process of UV disinfection is environmentally friendly.



**MAKE THE RIGHT CHOICE.
CHOOSE THE SAFER MIXER GRINDER**

**PRESENTING FABER MIXER GRINDERS
WITH 12 SAFETY FEATURES**



12 FEATURES

* Features available in selected variants



AVAILABLE IN DIGITAL & MANUAL VARIANTS*



PRE PROGRAMMED FUNCTIONS*



STURDY AND MATCHING COLOR JAR HANDLES



BIGGER DIAL FOR CONVENIENT MANUAL OPERATION



SS BLADES FOR HIGHER PERFORMANCE



MATT FINISH JAR HANDLES FOR BETTER GRIPPING



HIGH GRADE NYLON COUPLERS



MEASURING CUP



LEAKPROOF JARS



SHATTER PROOF PC JAR



100% COPPER MOTOR



DISHWASHER SAFE

FGM CANDY 4 JAR

- Manual functions
- Powerful 100% copper motor with automotive ball bearing
- Superior Quality SS 304 Jars & Blades
- Engineered for low noise
- Wattage: 600W/800W/1000W
- RPM, 22000 Approx. No Load Speeds
- Nylon Coupler
- Safety ensured overload protection switch and anti skid rubber feet
- SS 304 Jars & Blades with lockable Jar Lids, Jar with Flow Breaker
- 1.5L liquidizing jar, 1L Dry jar, 0.5L Chutney jar and 1.5L PC jar



8 Functions in 1



Available Colour



FGM CANDY 3 JAR

- Manual functions
- Powerful 100% copper motor with automotive ball bearing
- Superior Quality SS 304 Jars & Blades
- Engineered for low noise
- Wattage: 600W/800W/1000W
- RPM, 22000 Approx. No Load Speeds
- Nylon Coupler
- Safety ensured overload protection switch and anti skid rubber feet
- SS 304 Jars & Blades with lockable Jar Lids, Jar with Flow Breaker
- 1.5L liquidizing jar, 1L Dry jar, and 0.5L Chutney jar



8 Functions in 1



Available Colour

